

Fig. 1 SeaWinds geometry. (left) Swath diagram. (center) Contour plots of the antenna illumination patterns for egg and slice measurements. (right) Enhanced resolution grid illustration with single slice.

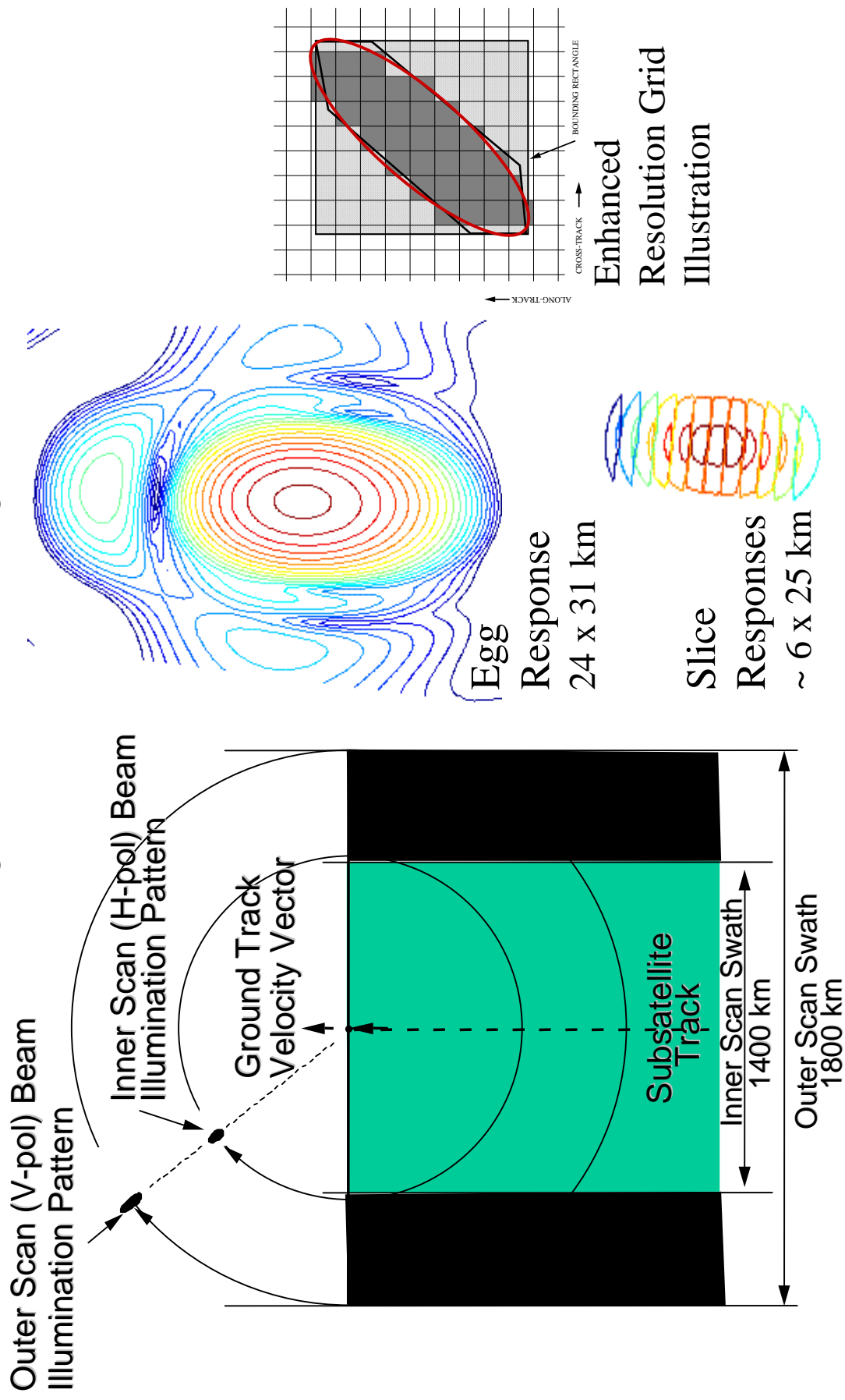


Fig. 2. Overlap of QuikScat slices for (top) a few consecutive pulses during a single antenna rotation and (lower) several antenna rotations

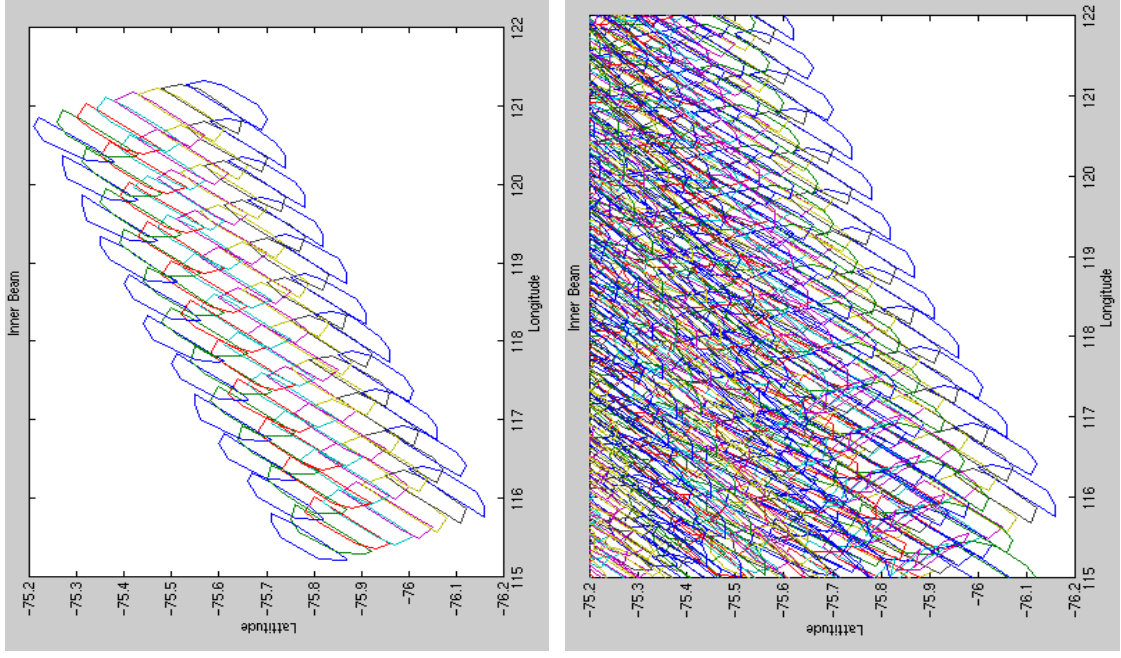


Fig. 3. SIR algorithm Simulation results.

- (a) Synthetic true image. (b) “drop in the bucket” grid image [non image] from eggs. (c) SIR image from egg measurements. (d) Grid image from slices [non image]. (e) SIR image from slices.

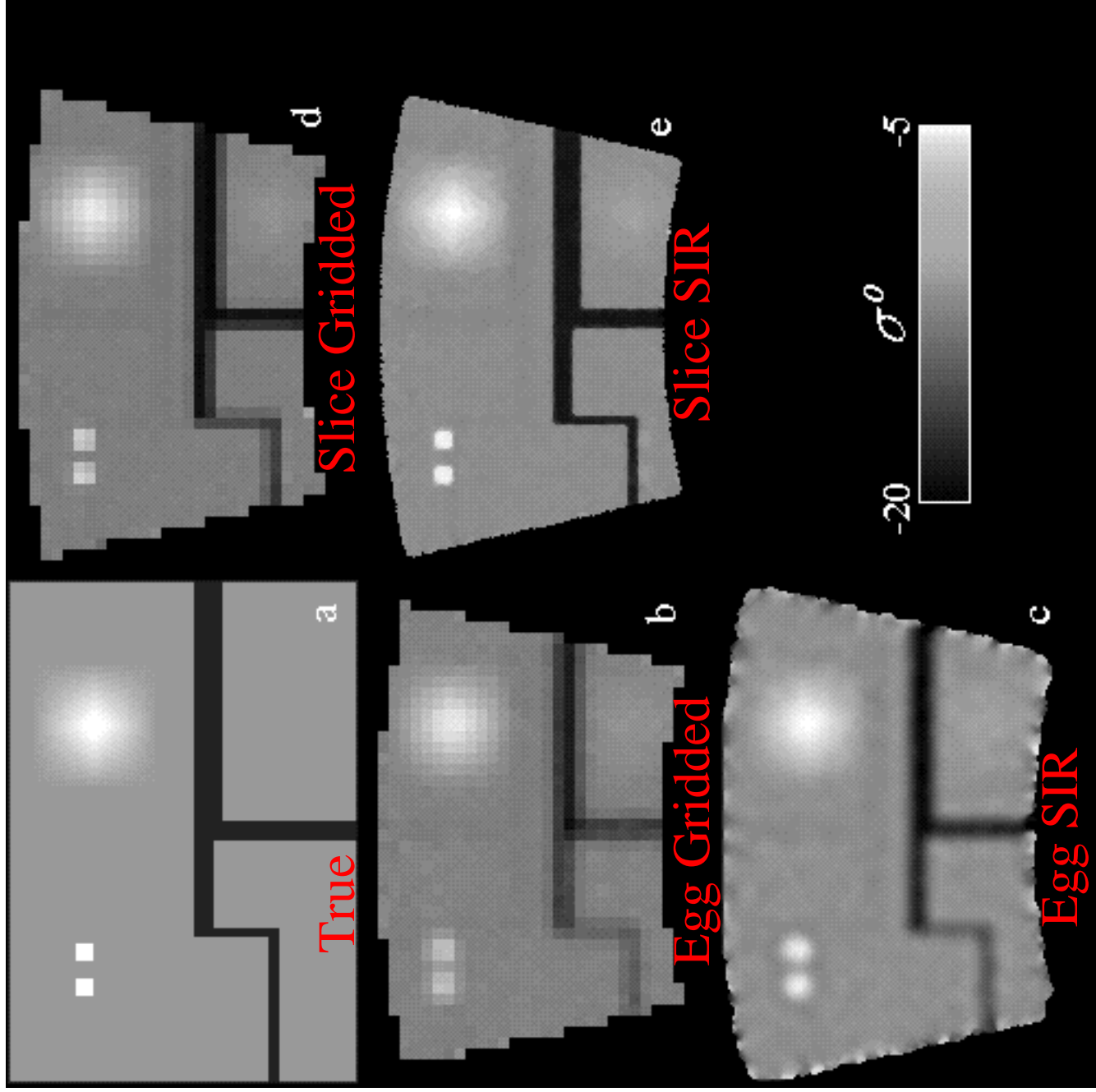


Fig. 4. Examples of polar region *A* images. These images have been ice masked.

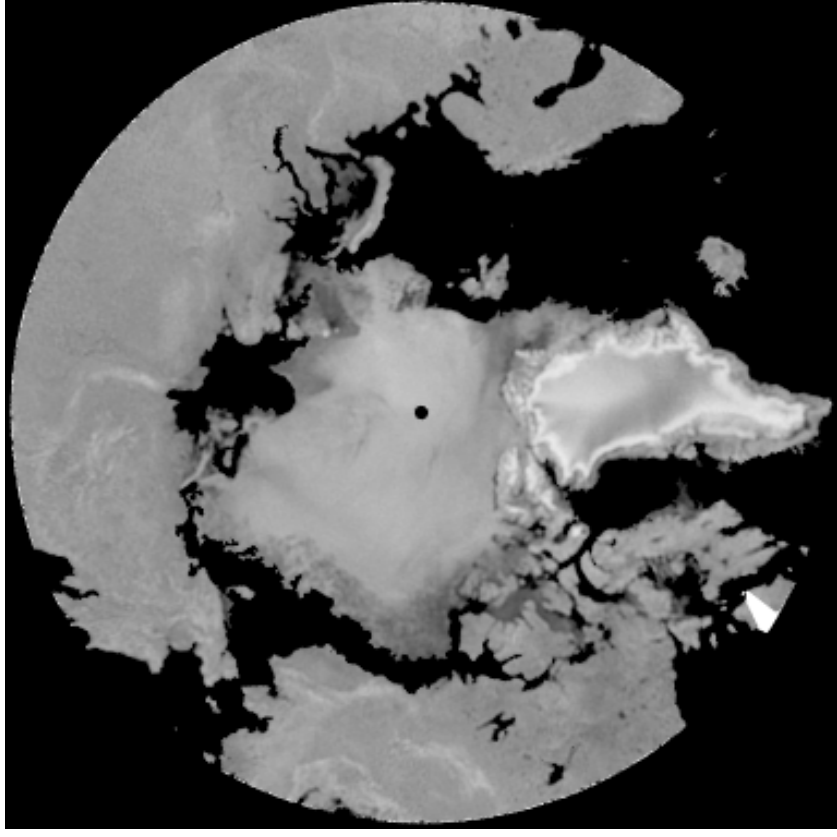
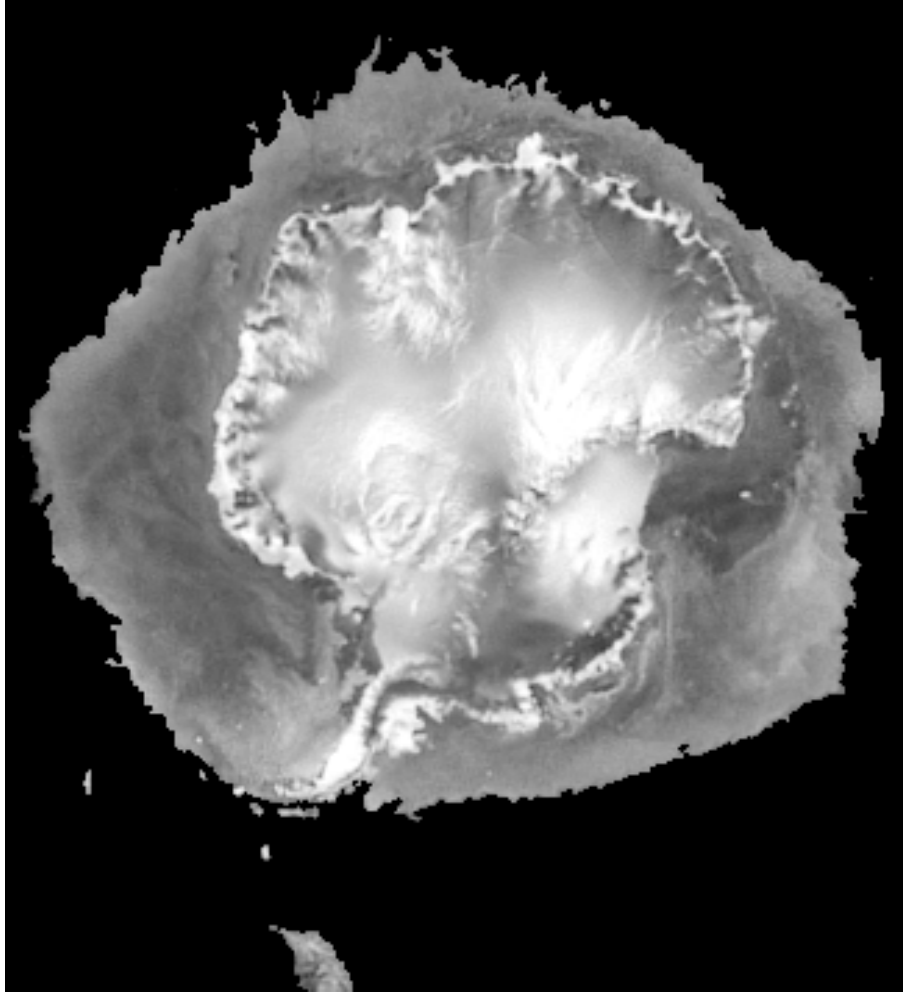


Fig. 5. Examples of QuikScat enhanced resolution land regions. All images have been land masked. Red boxes are shown in greater detail in later figures.

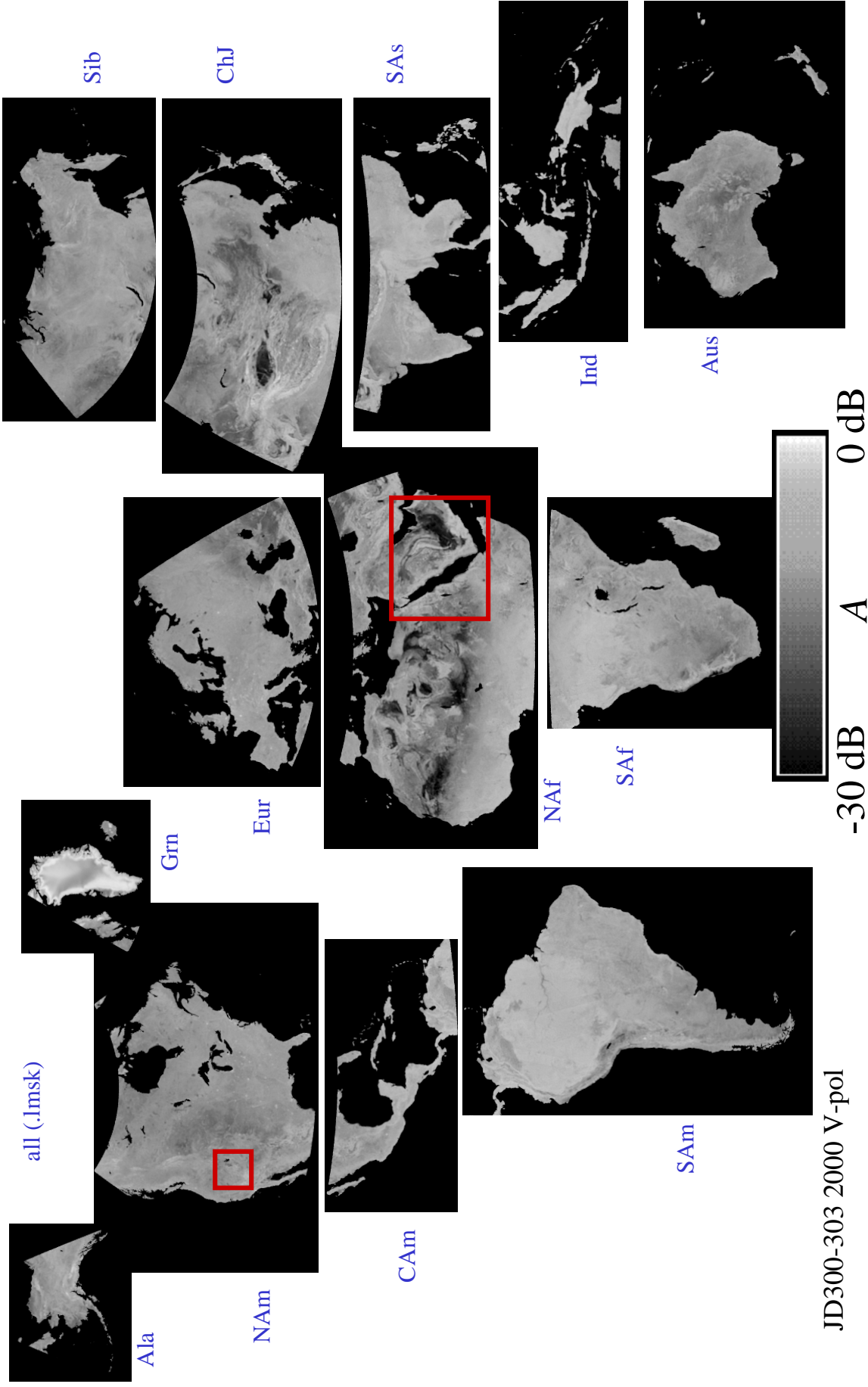
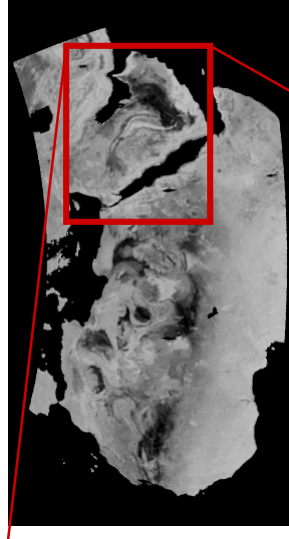
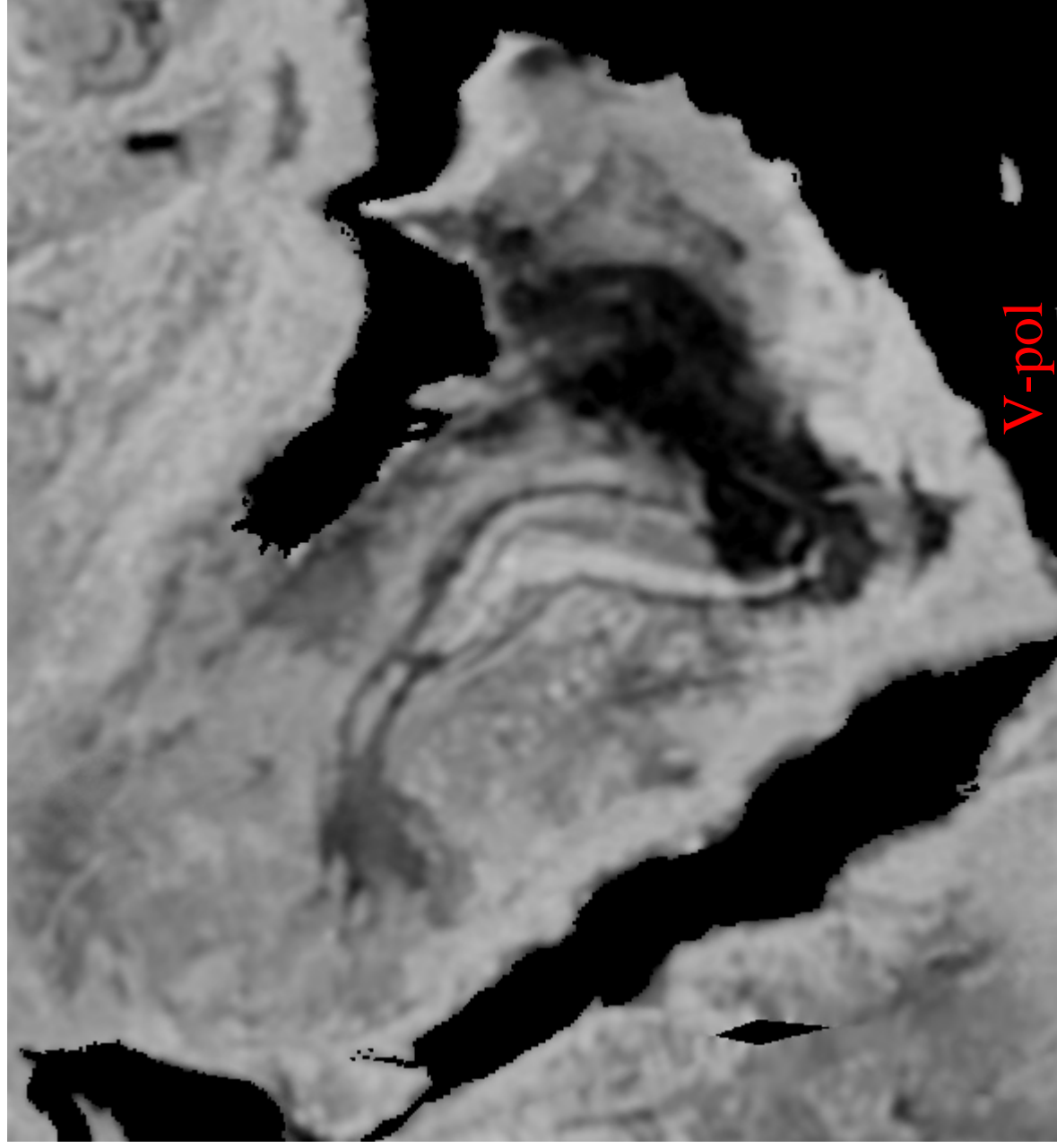
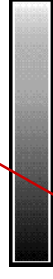


Fig. 6. Egg-based SIR enhanced-resolution image example.



Naf (.lmsk)

4.45 km
nominal
pixel
spacing



-30 dB A 0 dB

Full egg
image is
2120 x 1130
pixels for this
region

Fig. 7. Resolution comparison of various reconstruction types.

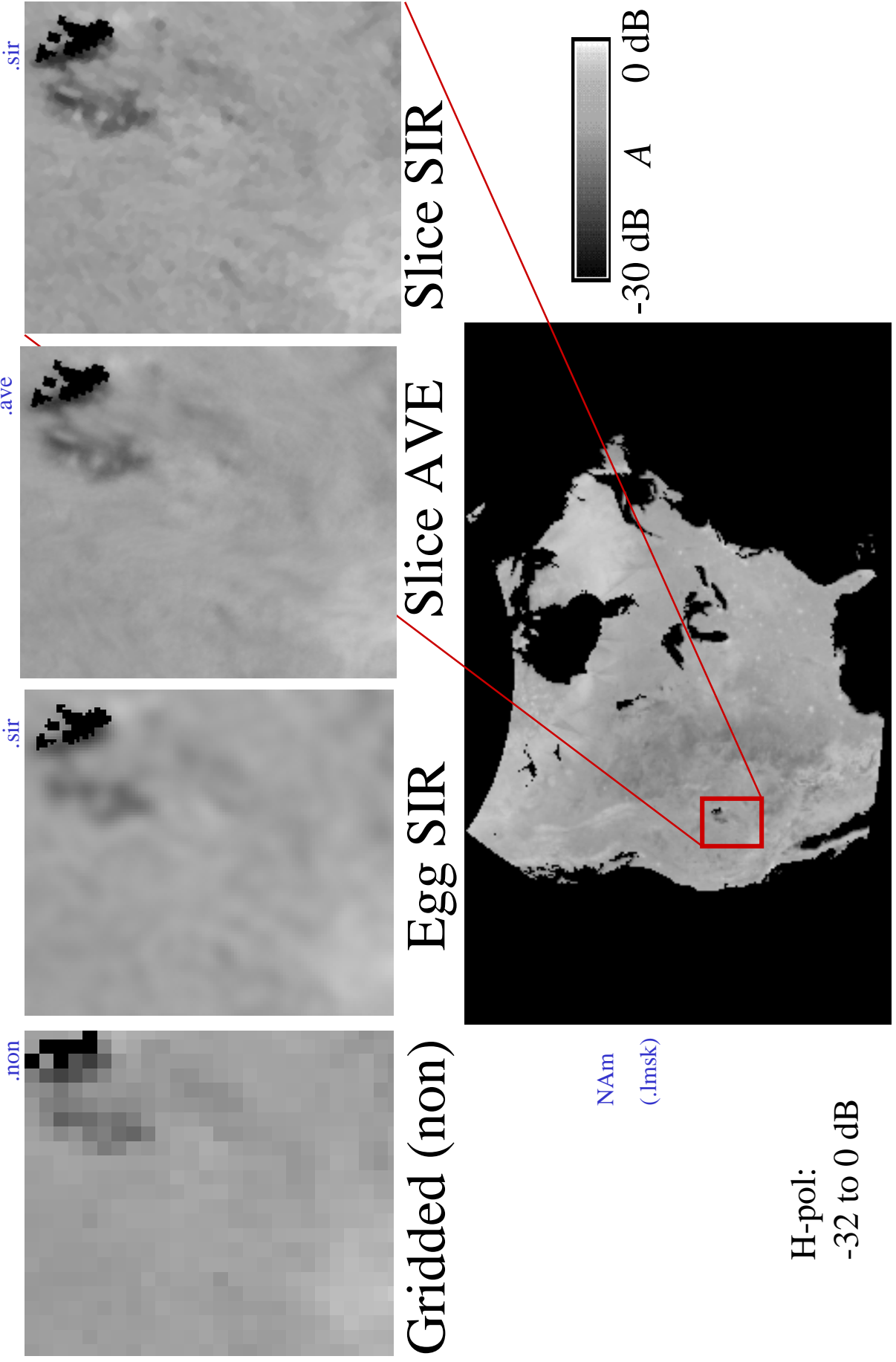
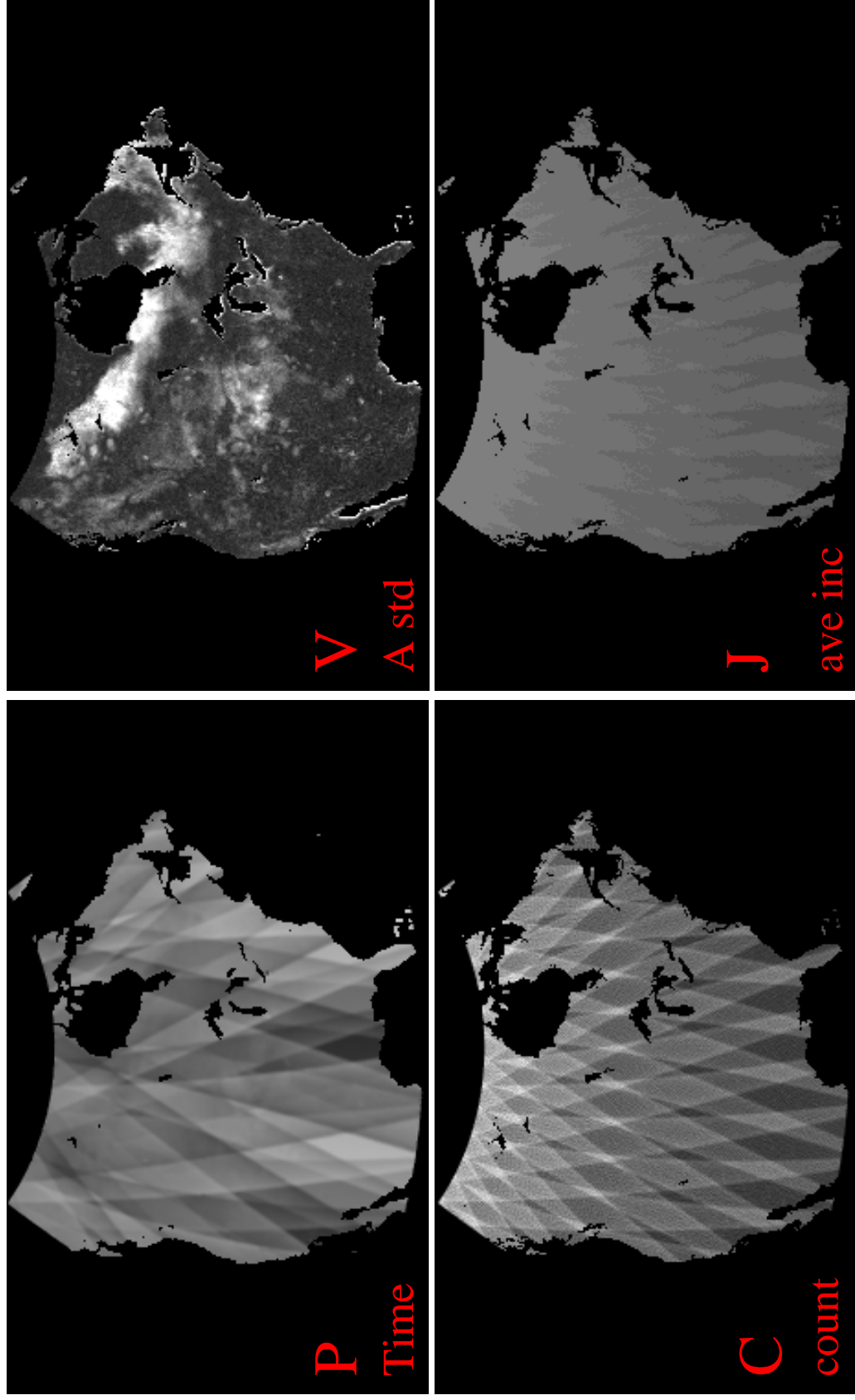


Fig. 8. Example ancillary products



NAM(.lmsk)

H-pol